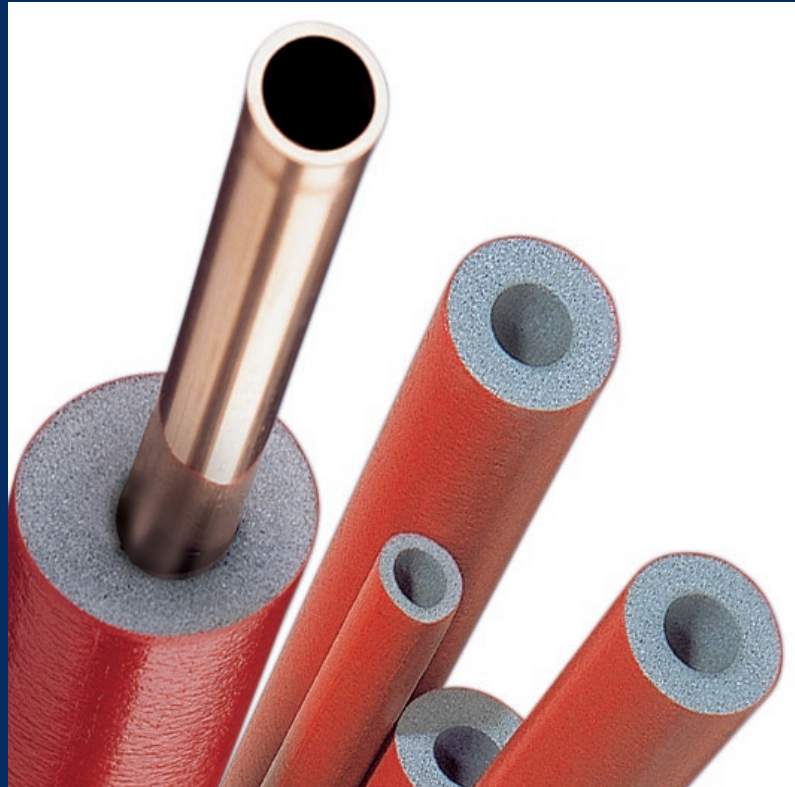




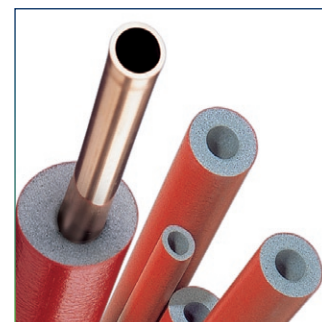
## ***THERMACOMPACT IS***



***Tube insulation  
with a strong protective,  
red polyethylene skin***

Description	High quality flexible polyethylene foam insulation system with a very strong, red polyethylene skin
Material	High grade extruded polyethylene tube insulation of closed cell structure, thickness 9 mm up to 27 mm
Application	For heating and plumbing whereby the pipes will be installed in walls and/or floors Situations where mechanical strength is important
Standard length	2 meter
Packaging	kartons, ca. 205 x 30 x 40 cm

Thermal conductivity ( $\lambda$ ) EN-ISO8497	0,040 W/mK at 40°C
Water-vapour diffusion resistance ( $\mu$ )	> 3500 according to DIN 52615
Reaction to fire, EN 13501-1	E <sub>L</sub> , normally inflammable
Density	25 - 35 kg/m <sup>3</sup>
Temperature range	- 80°C up to + 95°C



## Dimensions

Inner diameter ID		Insulation thickness			
Nominal value [mm]	Inch	9 mm	13 mm	20 mm	25 - 27 mm
15	¼	15/9	15/13		15/27
18	¾	18/9	18/13		18/26
22	½	22/9	22/13	22/20	22/26
28	¾	28/9	28/13	28/20	28/25
35	1	35/9	35/13	35/20	35/25
42	1 ¼	42/9	42/13	42/20	42/25



[www.thermaflex.com](http://www.thermaflex.com)



All information herein is a general indication only and not legally binding.  
It is subject to change without prior notice.